



Captain Cook Salt Project

A New Salt Resource in Western Newfoundland

Maiden 43-101 Mineral Resource Completed: Identified Inferred Resource at 95% NaCl cut-off of 908 million tonnes of salt (halite) at 96.9% NaCl

NaCl lower cut-off (%)	Volume (m ³)	Tonnes (million)	Density (kg/m ³)	NaCl (%)	Tonnes <i>in-situ</i> (million)
88	682,000,000	1,473	2.16	95.3	1,405
89	677,000,000	1,462	2.16	95.4	1,395
90	672,000,000	1,451	2.16	95.4	1,385
91	653,000,000	1,410	2.16	95.6	1,348
92	602,000,000	1,301	2.16	95.9	1,248
93	557,000,000	1,203	2.16	96.2	1,157
94	499,000,000	1,078	2.16	96.5	1,040
95	420,000,000	908	2.16	96.9	880
96	304,000,000	657	2.16	97.4	640
97	190,000,000	410	2.16	97.9	401
98	71,000,000	154	2.16	98.6	152
99	17,000,000	37	2.16	99.3	37

Note 1: Mineral resources are not mineral reserves and do not have demonstrated economic viability. There is no guarantee that all or any part of the mineral resource will be converted into a mineral reserve.

Note 2: The quantity of reported inferred resource in these estimations are uncertain in nature and there has been insufficient exploration to define these inferred resources as an indicated or measured mineral resource, and it is uncertain if further exploration will result in upgrading them to an indicated or measured resource category.

Note 3: The estimate of mineral resources may be materially affected by geology, environment, permitting, legal, title, taxation, socio-political, marketing or other relevant issues.

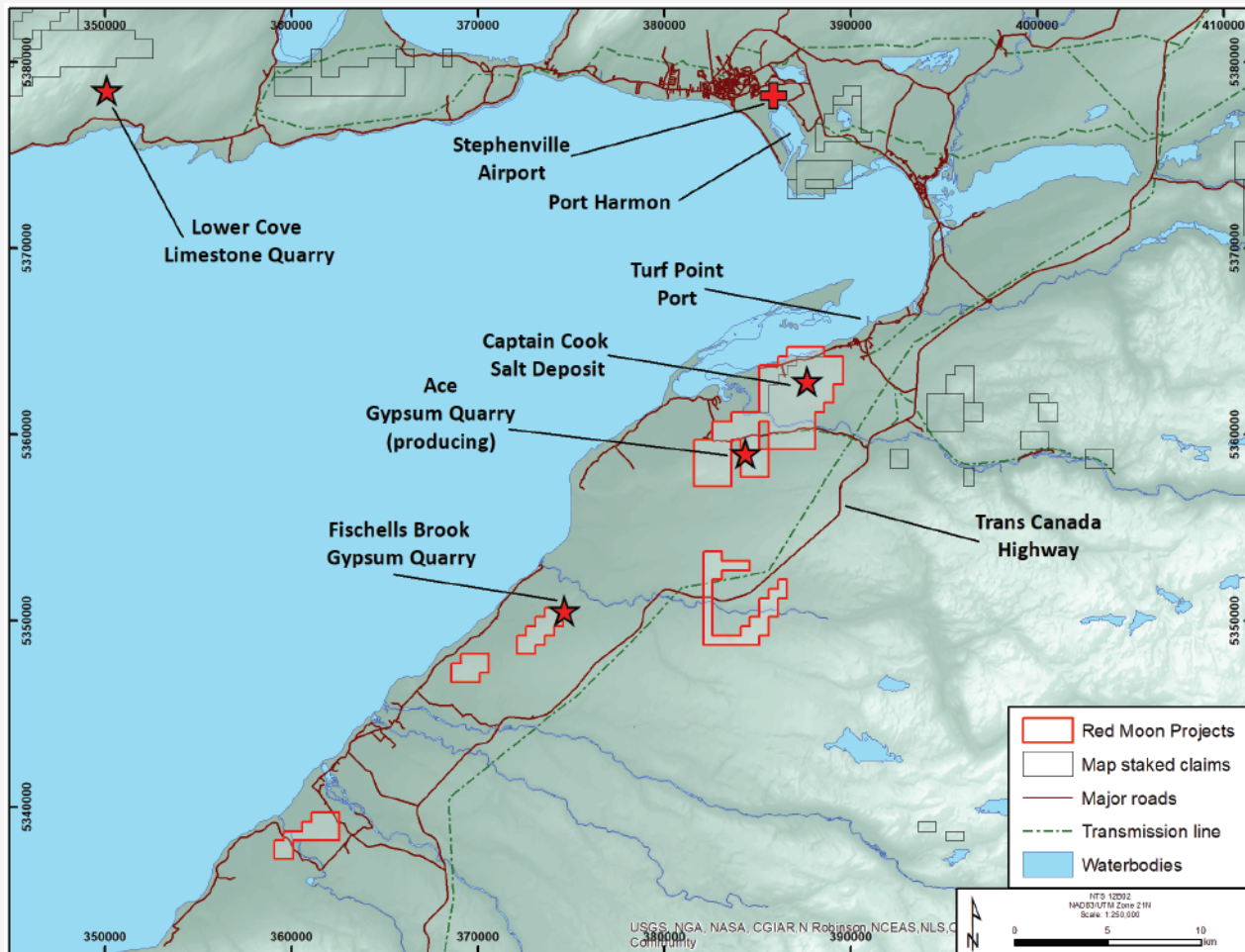
Note 4: Tonnes have been rounded to the nearest 1,000,000 (numbers may not add up due to rounding).

Project Highlights

- Red Moon Resources (TSX.V:RMK) owns a 100% working interest in the Captain Cook Salt Project, (parent company Vulcan Minerals Inc., TSX.V:VUL);
- Resource modelling based on previous drilling (5 holes over >2500 m) indicates a "tremendous continuity" of the salt resource from 68 to 377 m thick (avg 200-250 m); depth to the top of the salt formation varies from 183 m to 394 m;
- Based on positive physical and chemical characteristics (e.g. salt composition and quality), market applicability, infrastructure and transportation readiness, the Captain Cook project warrants feasibility evaluation



Captain Cook Salt Project

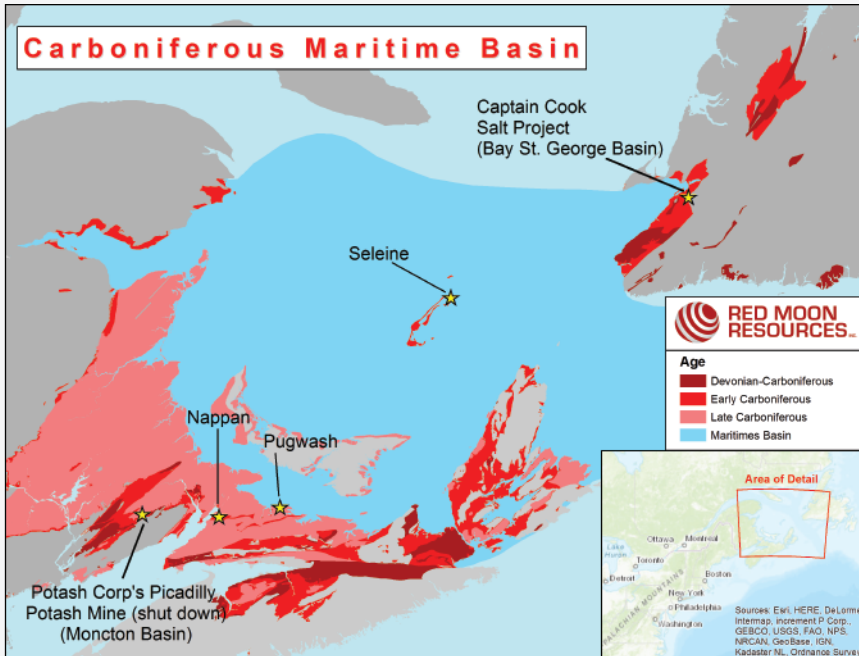


Excellent Access to Infrastructure

- Two deepwater ports as close as 5.5 km from project (Turf Point Port) and Port Harmon
- Two airports at Deer Lake and Stephenville
- Transected by Trans-Canada Highway
- Abundant local paved and all-weather gravel roads
- High voltage power line cuts property
- Mining friendly jurisdiction



Captain Cook Salt Project



Carboniferous Maritime Basin Has a Rich History of Mining

Salt

- Malagash, NS: 1918 - 1959
- Nappan, NS: 1947 - present (100,000 t/y)
- Pugwash, NS: 1959 - present (1.8 Mt/y)
- Seleine, QC: 1982 - present (2.0 Mt/y)

Moncton Basin					Bay St. George Basin				
Age	Group	Formation	Member	Lithology	Member	Formation	Group		
Visean	Mabou	Undivided Units		Red to grey conglomerate; red & green mudstone & sandstone		Searston	Barachois		
				Grey-green claystone					
	Windor	Cassidy Lake	Clover Hill	Penobscquis Salt	Grey to pale orange halite	Undifferentiated Upper Halite	Grey shale	Robinsons River	Codroy
				Upper Anhydrite	Dark grey-blue massive anhydrite				
			Upper Halite	Coarse	Argillaceous, grey to pale orange halite	Variable thickness & grade	Potash Zone		
				Laminated	Halite & sylvinite laminae of grey-green clay				
				Sylvinite	Low-grade sylvinite & carnalite				
				Banded	Orange halite, red-purple halite & sylvinite				
			Middle Halite	Potash Ore Zone	High-grade sylvinite associated with medium- to coarse-grained pale grey halite	Undifferentiated Middle Halite	Middle Halite		
				Red-brown	Red-brown argillaceous halite				
				Grey-green	Grey-green argillaceous halite				
			Basal Halite	Clean- to anhydritic halite	Basal Halite				
	Upperton		Massive- to finely laminated anhydrite			Codroy Road			
Macumber		Thinly bedded- to laminated limestone			Ship Cove				
Bourgeoisian	Sussex	Hillsborough		Conglomerates, sandstone; minor mudstone		Sooty Falls	Anguille		

Carboniferous Maritime Basin Geology

- Basin accumulated marine, non-marine sediments from late Devonian to early Permian
- Multiple sub-basins host equivalent evaporite sequences of anhydrite (+/- gypsum), limestone, salt, potash

*after Wilson, 2006



Captain Cook Salt Project

Captain Cook Drilling Highlights

Captain Cook #1

- 97.8% NaCl over 62.0 m, including sub-intervals of 98.4% NaCl over 34.0 m and 98.0% NaCl over 17.6 m

Captain Cook #2

- 97.1% NaCl over 101.3 m, including several high purity salt sub-intervals with up to 97.8% NaCl over 26.0 m

Captain Cook #4

- 96.8% NaCl over 335.3 m, including two thick sub-intervals of high purity salt of 98.0% NaCl over 125.3 m and 97.5% NaCl over 177.3 m

Captain Cook #5

- 95.3% NaCl over 95.3 m and 95.9% NaCl over 35.6 m

The Captain Cook Salt Project and other Red Moon projects are available for investment and partnership.

Please contact Patrick Laracy, President, for further information.

333 Duckworth Street, St. John's, NL, A1C 1G9

Telephone: (709) 754-3186

laracy@vulcanminerals.ca

www.redmoonresources.com